

Welcome to IOS Furniture

**IOS FURNITURE**  
*One Stop Solution for Furniture*

**IOS FURNITURE**  
*One Stop Solution for Furniture*

**LOOSE FURNITURE**

Company  
Profile



**IOS FURNITURE**  
*One Stop Solution for Furniture*





company profile  
**index**



Introduction



Meet the  
Managing Director



Location and  
Infrastructure



Production Facility



Products Portfolio



Our Clients



Why Choose IOS Furniture?



Contact Us Thanks





## **Welcome to IOS Furniture**

At IOS Furniture, we believe that great spaces begin with innovative ideas and superior craftsmanship. Since our inception in 2007, we have been committed to transforming workspaces and homes with premium-quality, modular furniture solutions.

With a 65,000 sq. ft. state-of-the-art manufacturing facility in Bommasandra, Bangalore, we specialize in designing, manufacturing, and delivering customized modular furniture that perfectly balances aesthetics, functionality, and durability.

Our mission is to be the leading quality furniture manufacturer, supplier, and exporter by consistently exceeding expectations with our uncompromising commitment to quality, innovation, and on-time delivery.

Join us as we redefine the future of modular furniture. Welcome to a world where every design tells a story, every detail matters, and every product is crafted to perfection.

**IOS Furniture – Your Partner in Modular Excellence.**



## Meet Our Managing Director

### **Mr. Raghavendra Prasad** Managing Director

Mr. Raghavendra Prasad  
Founder & Managing Director

In 2007, Mr. Raghavendra Prasad started IOS Furniture with a dream to create high-quality, innovative furniture. Today, it stands as a state-of-the-art manufacturing hub, spread across 65,000 sq. ft., trusted by 107 leading companies in Bangalore, Hyderabad, and Chennai.

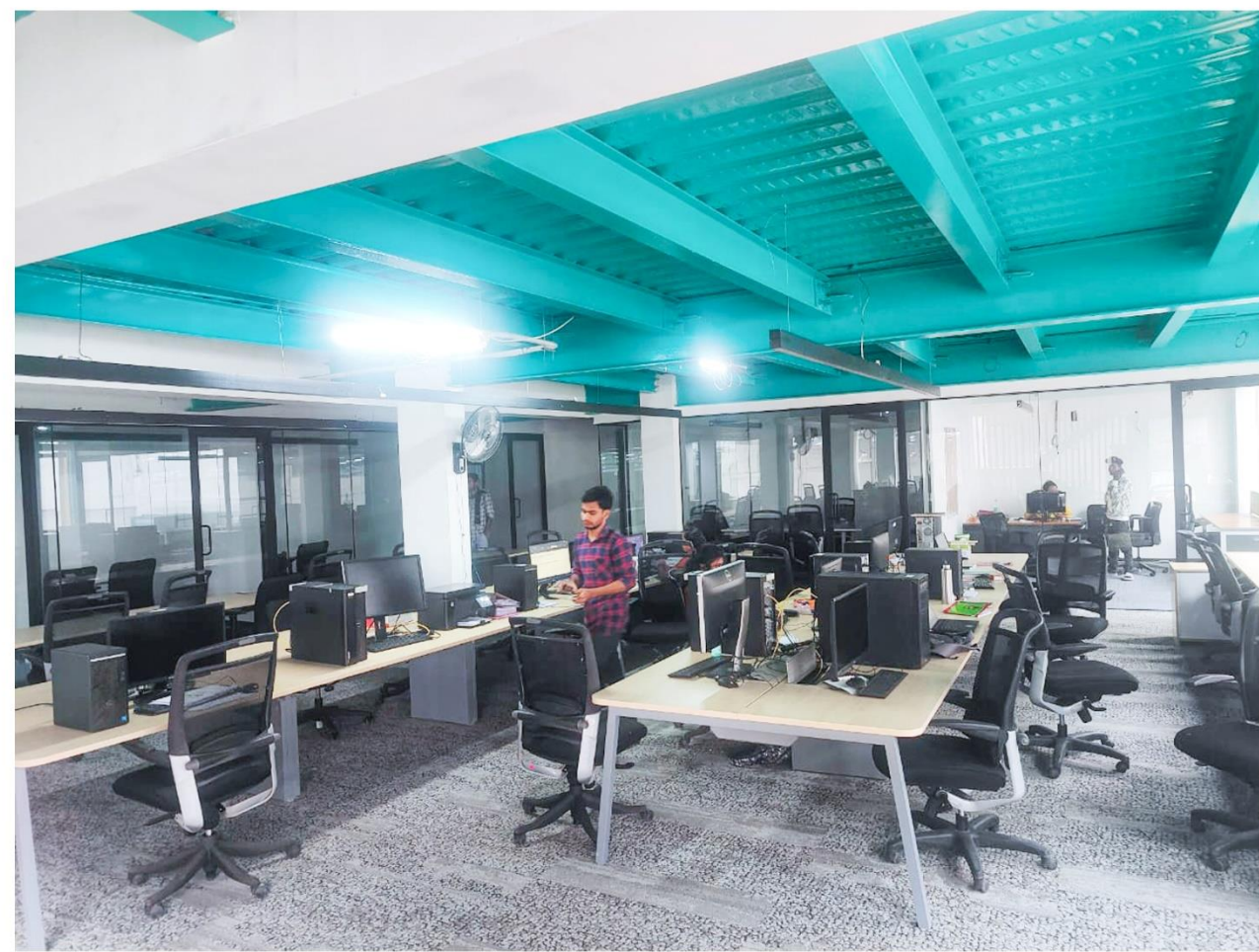
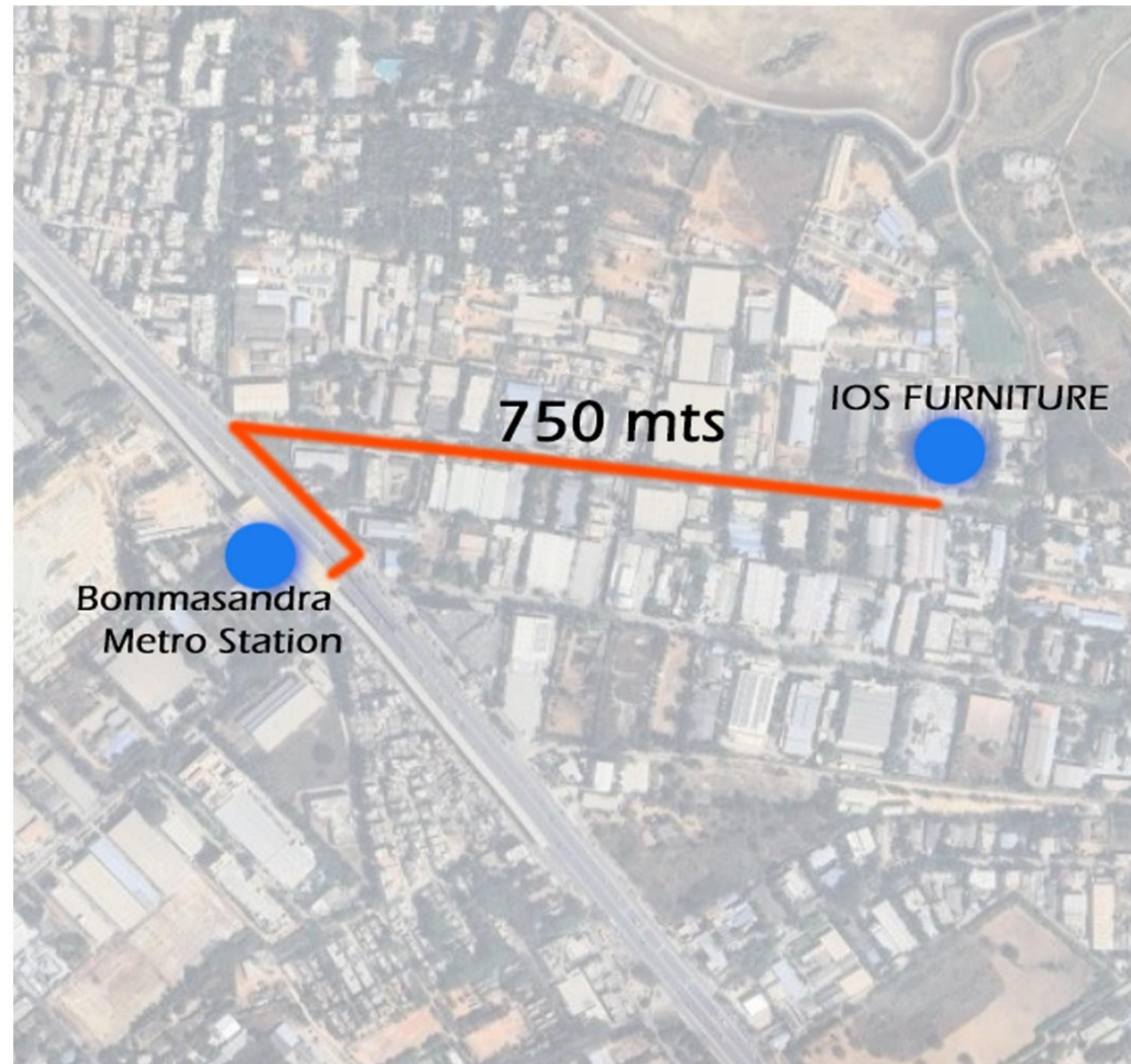
Driven by his vision for uncompromising quality, he invested in advanced machinery from Germany and Japan, ensuring precision and durability in every product. His commitment to excellence and strong client relationships has made IOS Furniture a trusted name in the industry.

"Quality builds trust, and trust builds success."

— Mr. Raghavendra Prasad







## Location and Infrastructure

IOS Furniture is strategically located in Bommasandra, Bangalore, just 750 meters from the Bommasandra Metro Station, ensuring seamless connectivity and easy accessibility for clients and partners.

## World-Class Infrastructure Includes:

**Advanced Woodworking Machinery:** Featuring CNC routers, edge banding machines, panel saws, laminating machines, and more, to deliver high-quality wooden furniture components.

**Metal Fabrication Units:** Equipped with laser cutting, bending, welding, and powder coating facilities to create strong and durable metal structures for furniture.

**Sofa & Upholstery Unit:** Specializing in crafting high-comfort sofas, pouffes, and customized seating solutions.



# WOOD SECTION



**CNC BIESSE ROVER GOLD**

**Precision Engineering:** Ensures high accuracy and flawless cuts for customized modular furniture production.

**Versatile Operations:** Supports milling, drilling, and cutting on a wide range of materials like MDF, plywood, and laminates.



**HOT PRESS BISSE BRAND**

**Fast Pasting:** Completed in 5 to 10 minutes.

**High Capacity:** Maximum board size 8x4 (18 panels).

**Powerful Press:** 50-ton capacity for efficient pressing.

**Durable:** Built for high-volume, heavy-duty use.



**COLD PRESS - MODULA J-50T**

**Slow Pasting:** Completed in 6 to 8 hours.

**High Capacity:** Maximum board size 8x4 (38 panels).

**Powerful Press:** 50-ton capacity for stable pressing.

**Reliable:** Designed for high-volume applications.



**DIGITAL CUTTING MACHINE - PANEL SAW**

**High Efficiency:** Cuts 50 to 60 boards per day.

**Precise Cuts:** Ensures accuracy for 8x4 plywood.

**Fast Processing:** Streamlined for quick production.

**Reliable:** Built for consistent, high-volume output.



**POST FORMING MACHINE**

**Shapes and bends laminate edges**

**Rounding Process:** Smooths and finishes edges

**Ensures consistent results on every piece.**

**Speeds up production for quality finishes.**



**DIGITAL BORING MACHINE**

**Precise Drilling:** Fits into pre-drilled holes.

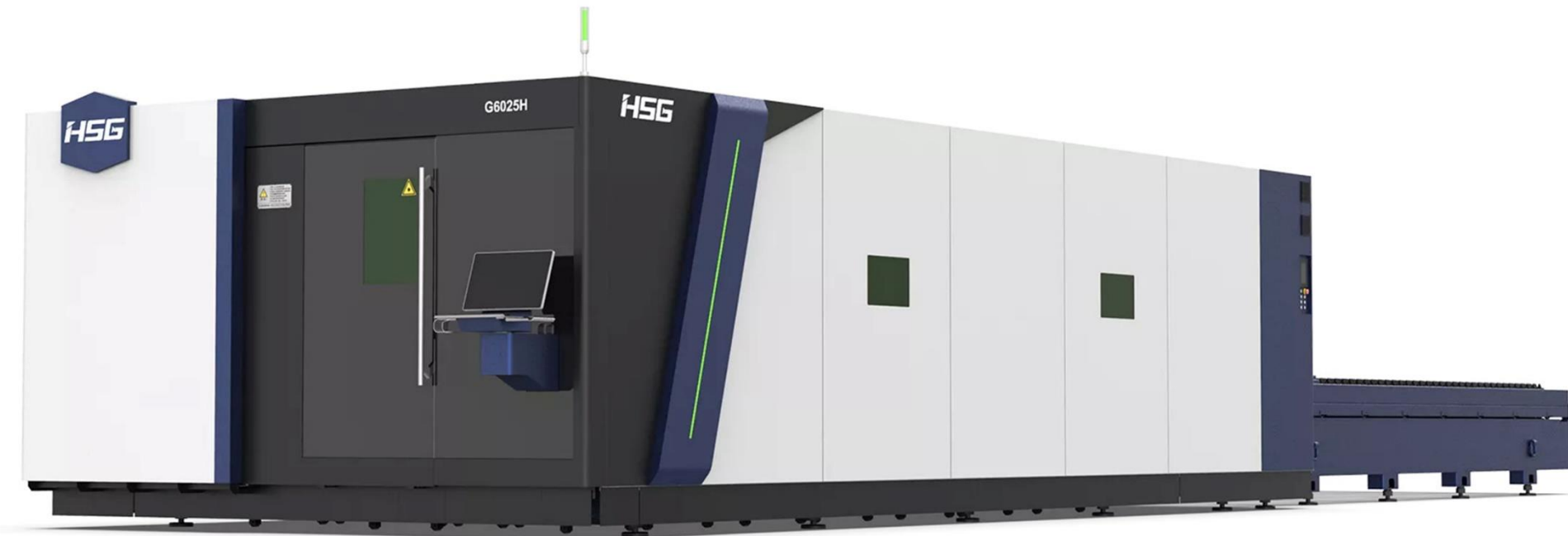
**Versatile:** Used for solid wood furniture

**Custom Work:** Ideal for Modular furniture.

**Efficient:** Fast, accurate boring for quality results.



# METAL FABRICATION UNIT



## LAZER METAL CNC MACHINE - (HSG BRAND)

High Precision: Cuts metal parts with accuracy.  
Fast Production: Speeds up bulk manufacturing.  
Improved Quality: Ensures high-quality finished products.  
Versatile: Works with various materials.



LINE



## DIGITAL METAL BENDING MACHINE

Precise Bending: Shapes metal tubes, sheets.  
Versatile: Works with various profiles.  
Efficient: Fast and accurate bending.  
Durable: Built for heavy-duty use.



## CUTTING MACH

ig: Accurate shape

## DIGITAL METAL PUNCHING MACHINE

Precise Cutting: Pipes, tubes, vessels.  
Versatile: Works with metal and plastic.  
Efficient Operation: Fast and accurate cuts.  
Durable: Handles various materials reliably.



## METAL V NOTCH MACHINE

V Notching: Cuts square and rectangular tubes.  
Quick Folding: Creates 90° corners easily.  
Efficient: Notches through three tube walls.  
Versatile: Ideal for metal tube work.



## METAL SHEET CUTTING MACHINE

Precise Metal Cutting: Accurate shape and size.  
Versatile Application: For various industries.  
Efficient Production: Fast and consistent results.  
Durable Construction: Built for heavy-duty use.



# SOFA & UPHOLSTERY UNIT:



**CNC Foam Cutting Machine**



**FABRIC STRETCHING MACHINE**



[www.chinafoxsew.com](http://www.chinafoxsew.com)  
**UPHOLSTERY SEWING MACHINE**



**SOFA FRAME CUTTING MACHINE**



## **PRODUCTS PORTFOLIO**

# **BOOTH SEATING**









































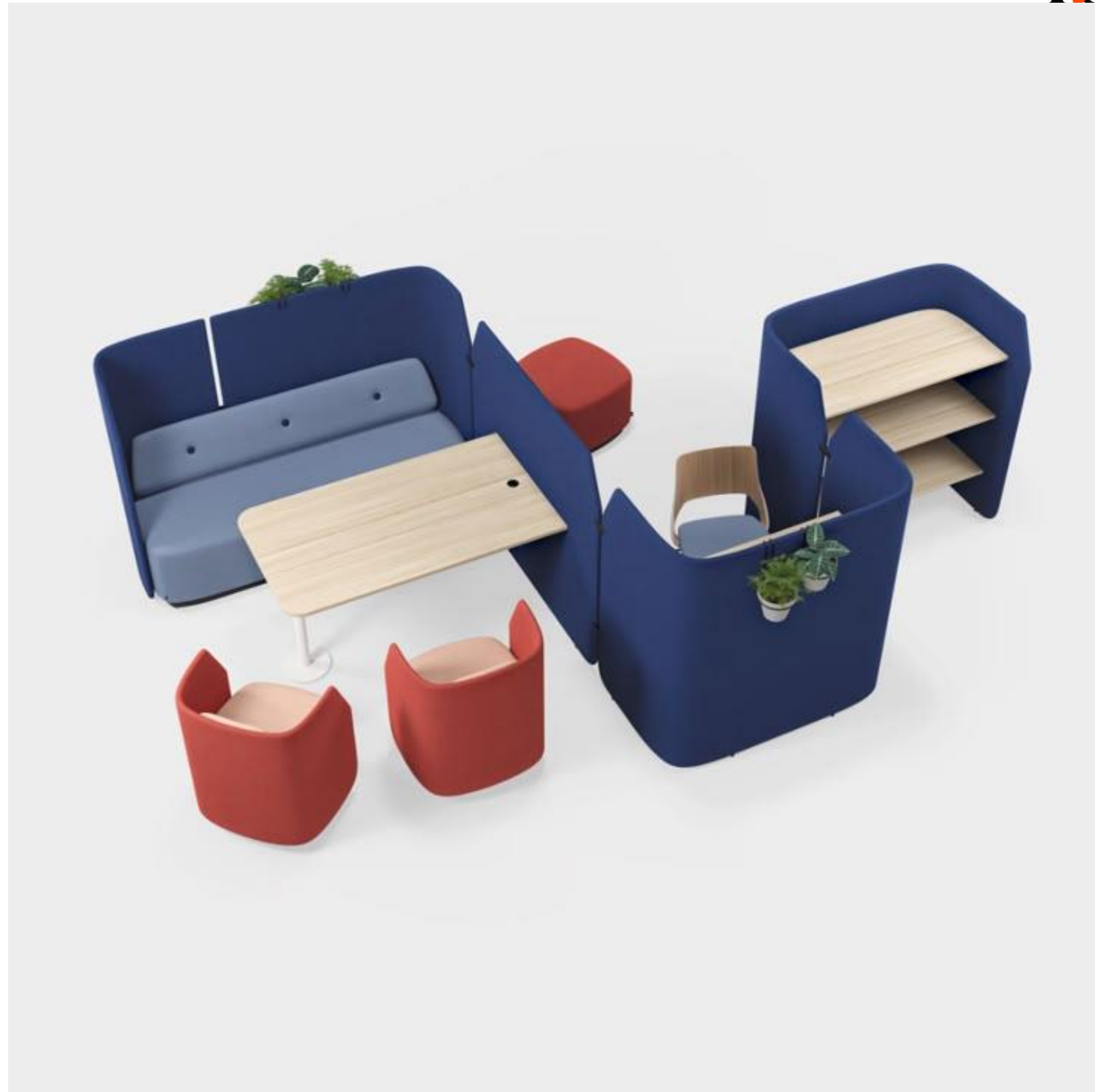


























# PRODUCTS PORTFOLIO

# SOFA SEATING





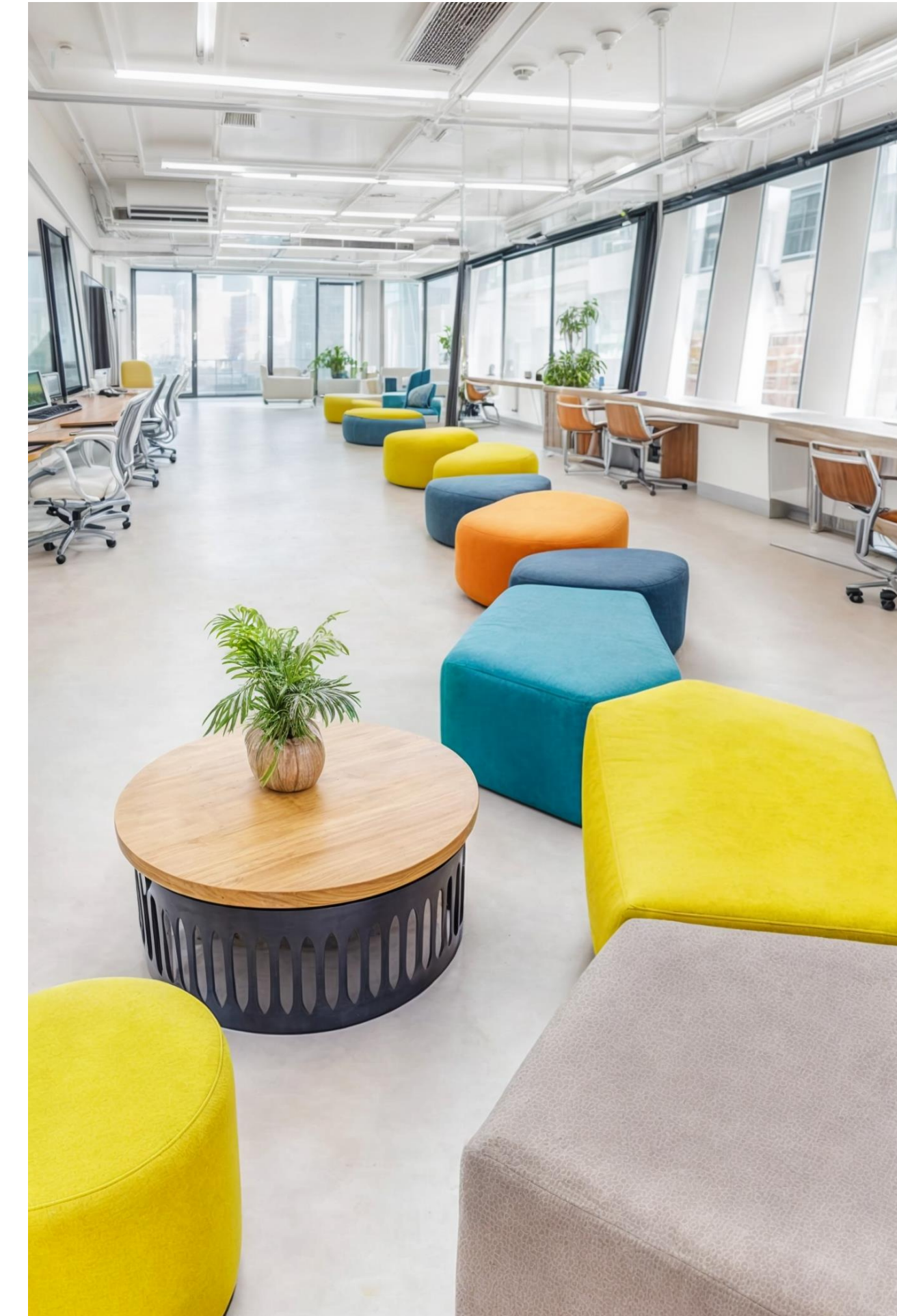
**SOFAS**





**SOFAS**





**SOFAS**





**SOFAS**





**SOFAS**





**SOFAS**





**SOFAS**





**SOFAS**





**SOFAS**





**SOFAS**





**SOFAS**





**SOFAS**





**SOFAS**





**SOFAS**





**SOFAS**





**SOFAS**





**SOFAS**





**SOFAS**





**SOFAS**





**SOFAS**





**SOFAS**





**SOFAS**





**SOFAS**





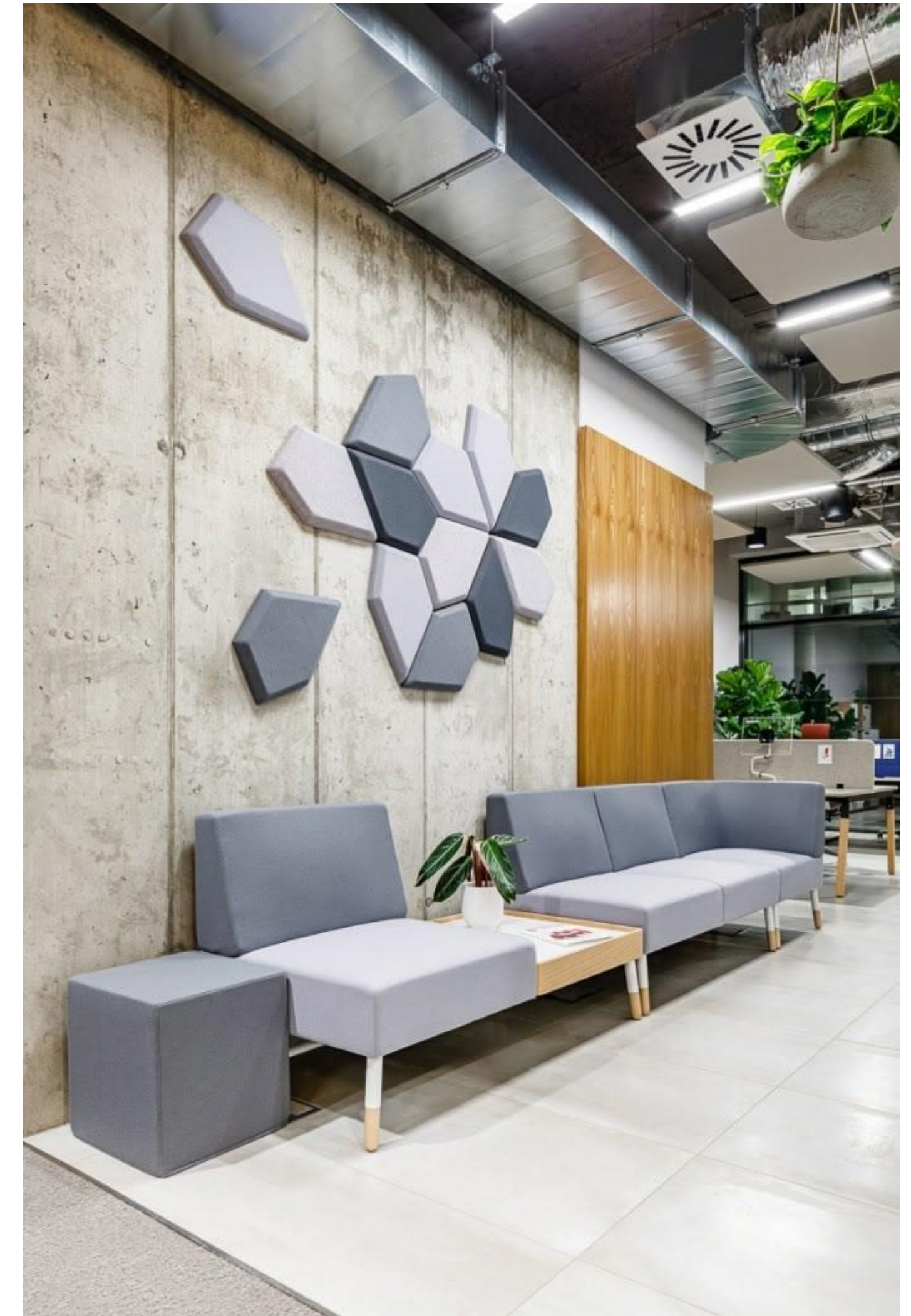
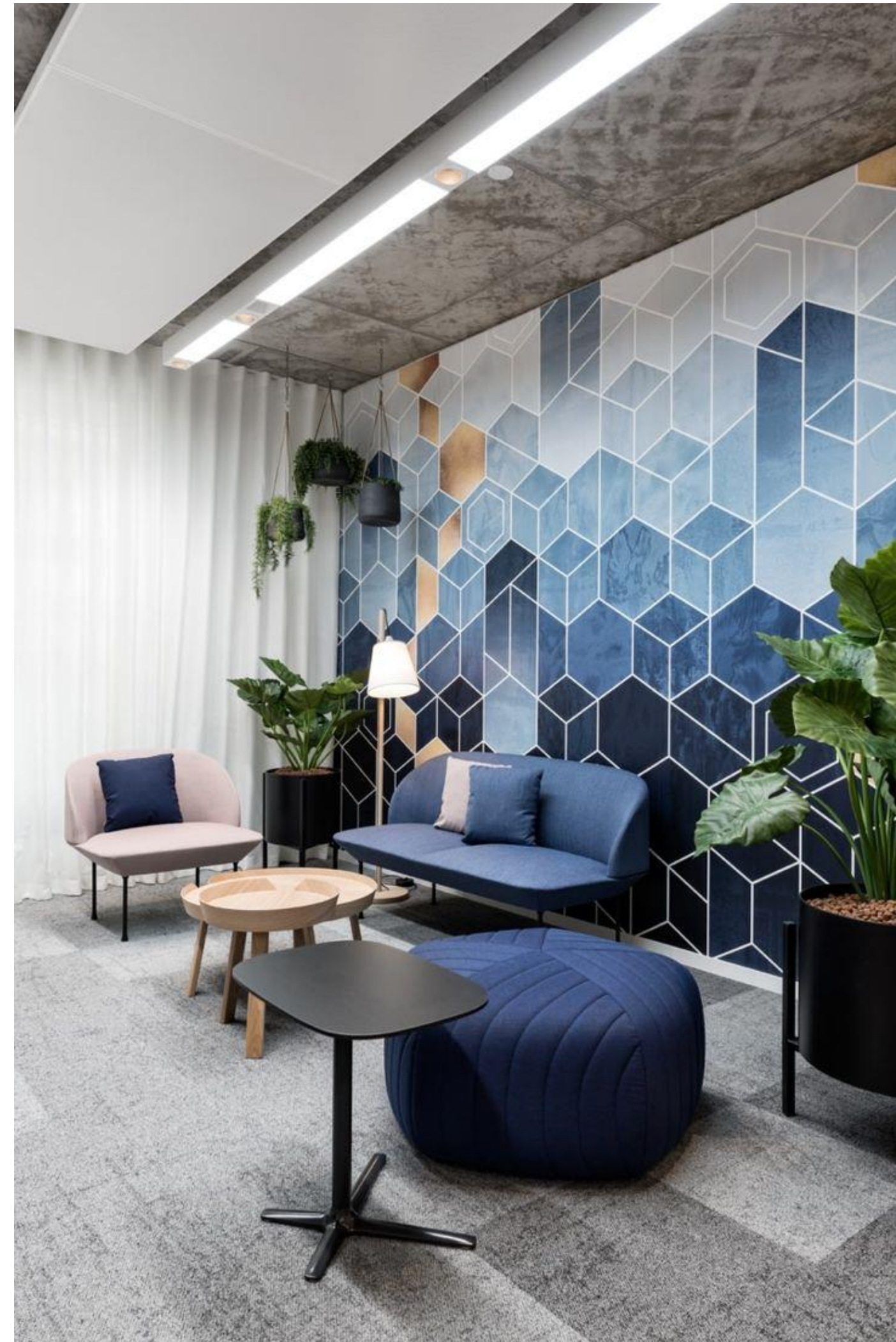
**SOFAS**





**SOFAS**





**SOFAS**



# PRODUCTS PORTFOLIO

# PUFFIES





**PUFFIES**





**PUFFIES**





**PUFFIES**





**PUFFIES**





**PUFFIES**





**PUFFIES**





**PUFFIES**





**PUFFIES**





**PUFFIES**





**PUFFIES**





**PUFFIES**





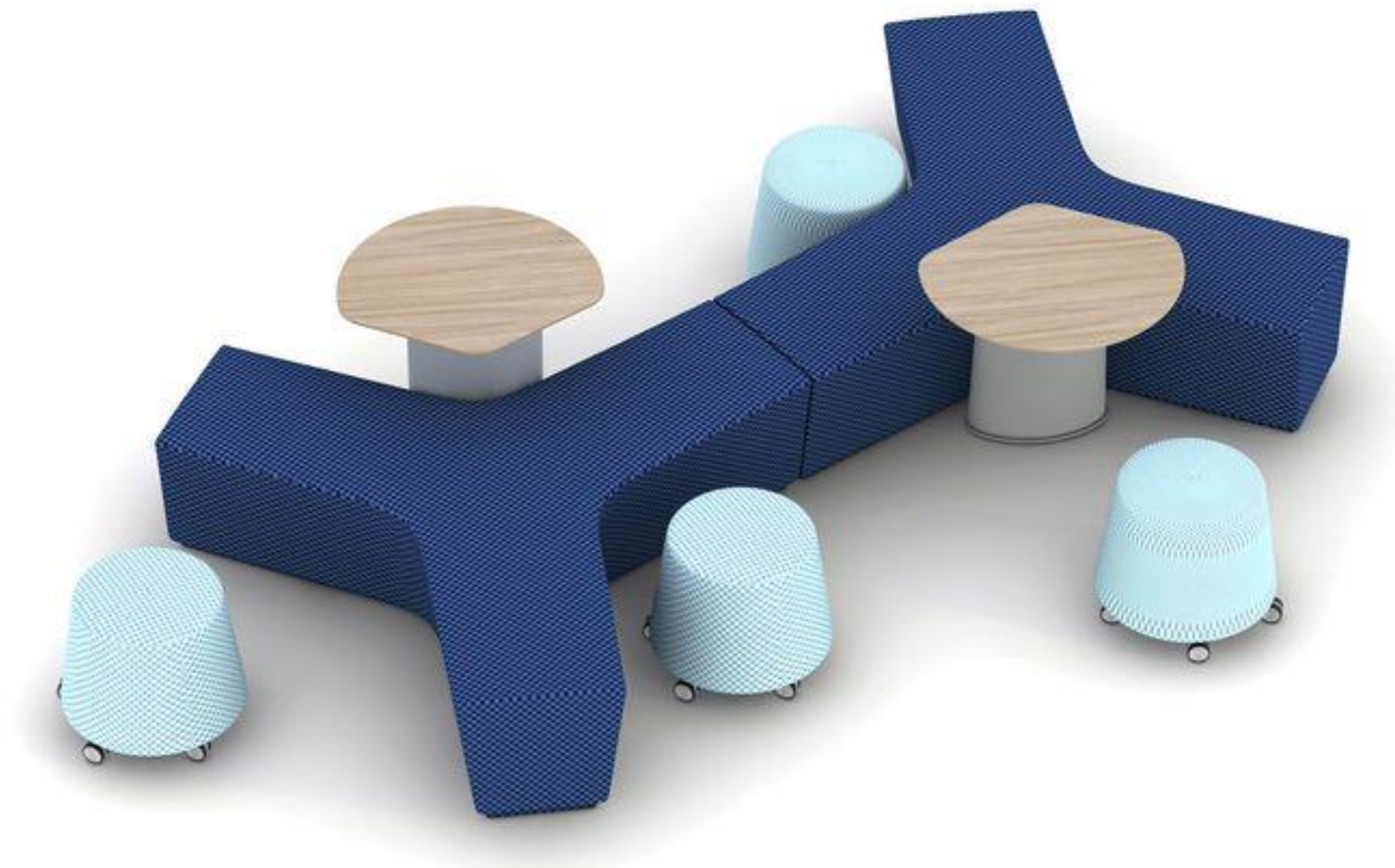
**PUFFIES**





**PUFFIES**





**PUFFIES**





**PUFFIES**







**PUFFIES**



## **PRODUCTS PORTFOLIO**

# **LOUNGE CHAIRS**





**LOUNGE CHAIRS**





**LOUNGE CHAIRS**





**LOUNGE CHAIRS**





**LOUNGE CHAIRS**





**LOUNGE CHAIRS**





**LOUNGE CHAIRS**





**LOUNGE CHAIRS**





**LOUNGE CHAIRS**





**LOUNGE CHAIRS**





**LOUNGE CHAIRS**





**LOUNGE CHAIRS**





**LOUNGE CHAIRS**





**LOUNGE CHAIRS**





**LOUNGE CHAIRS**





**LOUNGE CHAIRS**





**LOUNGE CHAIRS**





**LOUNGE CHAIRS**



# **PRODUCTS PORTFOLIO**

# **HIGH TABLE & CHAIRS**





**HIGH TABLE AND CHAIRS**





**HIGH TABLE AND CHAIRS**





**HIGH TABLE AND CHAIRS**





**HIGH TABLE AND CHAIRS**





**HIGH TABLE AND CHAIRS**



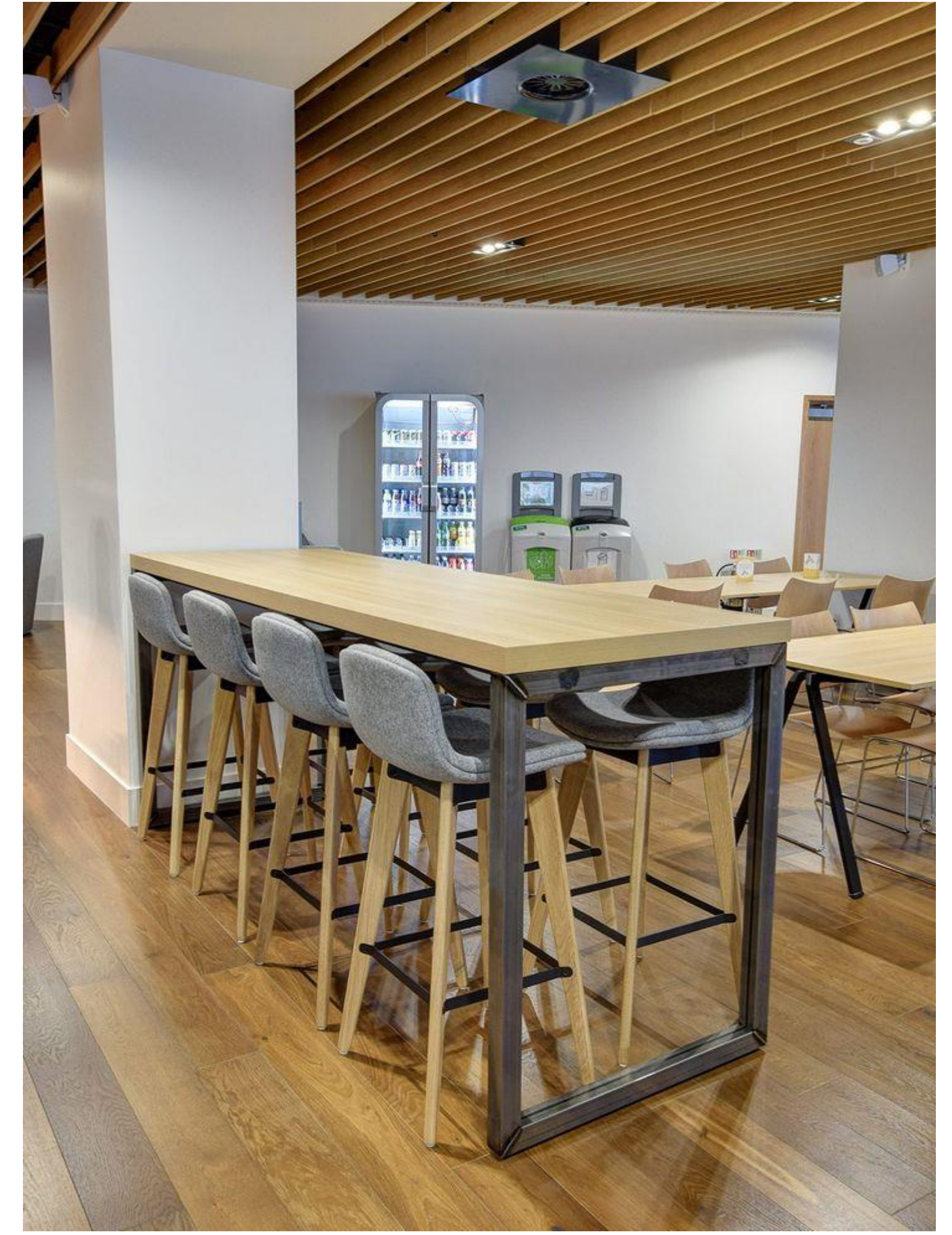






**HIGH TABLE AND CHAIRS**





**HIGH TABLE AND CHAIRS**



# OUR VALUABLE CLIENTS

accenture



LSEG



ORACLE

JPMORGAN  
CHASE & CO.

SIEMENS



amazon

Honeywell



TIMKEN

Walmart



nVIDIA



ZEBRA



BROADCOM

SAMSUNG

Goldman  
Sachs



Broadridge

Adobe

APPLIED  
MATERIALS

Agilent

Agilent

TESCO

Morgan Stanley

SOCIETE  
GENERALE

KENNAMETAL

CATERPILLAR

ABInBev

citrix

NOKIA

verizon

vmware

cognizant

NetApp

TABLE SPACE



# WHY CHOOSE IOS FURNITURE?

- **State-of-the-Art Facility:** 65,000 sq. ft. factory with advanced German and Japanese machinery.
- **Fast & Reliable:** Capacity to produce 300 workstations per day, delivered within 5 days.
- **Superior Quality:** Precision-crafted furniture backed by a 10-year warranty.
- **Custom Solutions:** Modular kitchens, wardrobes, and workstations tailored to your needs.
- **Diverse Options:** Largest range of modular leg styles and vibrant finishes.
- **Trusted by Leaders:** Partnered with 107+ top companies in major cities.
- **Eco-Friendly Practices:** Sustainable and responsible manufacturing.
- **Innovation, Quality, and Reliability**—you can count on IOS Furniture!



# CONTACT US

Website: [www.iosfurniture.com](http://www.iosfurniture.com)

OUR MAILBOX:  
[info@iosfurnitures.com](mailto:info@iosfurnitures.com)

OUR PHONE:  
+91 914 8617 658  
+91 984 5170 178

OUR ADDRESS:  
3rd Phase, 194, Hosur Rd, Bommasandra Industrial Area,  
Bengaluru, Bommasandra, Karnataka 560099

